



This is me

Please stick a photograph here

My name is



In my house

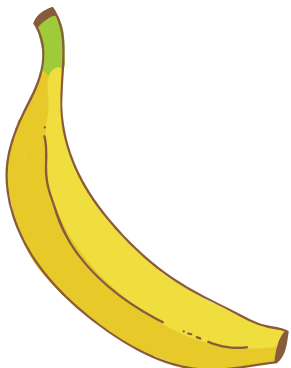
Draw who lives with you



Draw your pets



Cut out a picture of your favourite food and stick it here



Cut out a picture of your favourite toy and stick it here



Can you put your clothes on by yourself?

yes



no

Can you fasten your coat by yourself?

yes

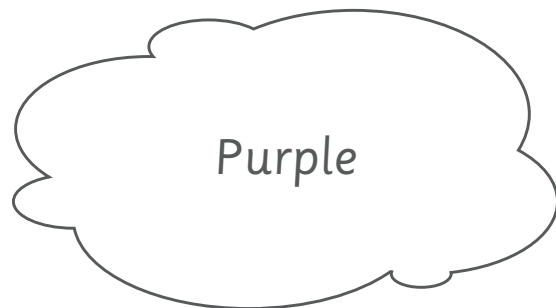
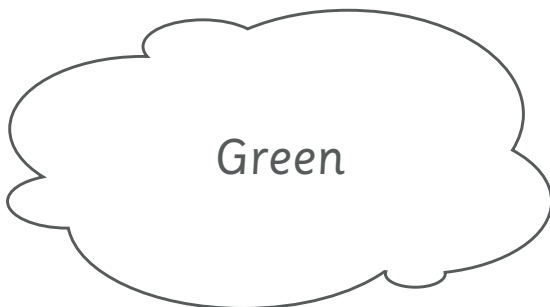
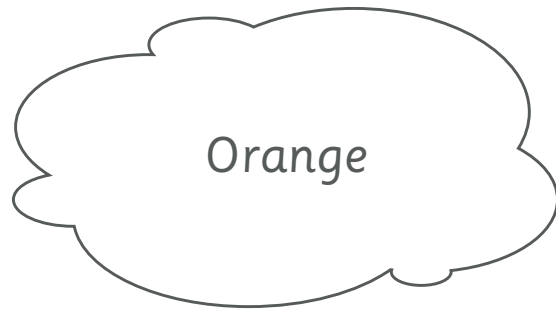
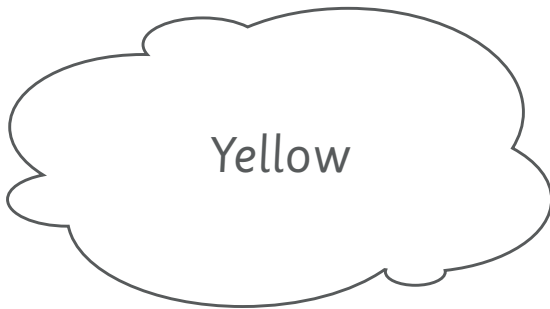
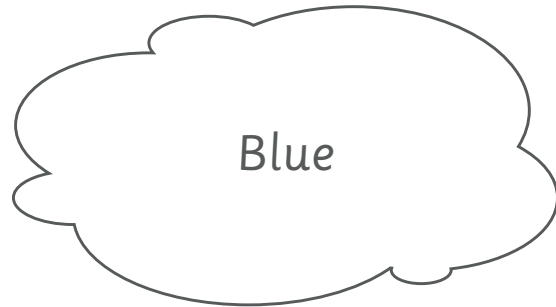
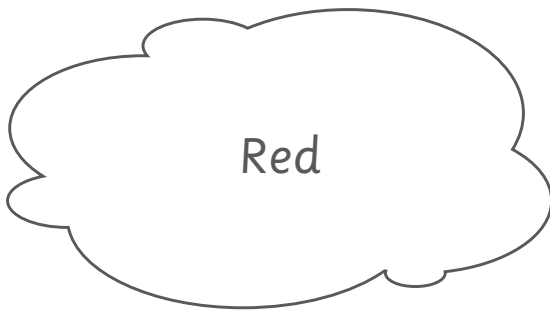


no

Try and write these numbers underneath

1 2 3 4 5 6 7 8 9 10

Can you colour the puddles?



Time to get creative

All children starting Green Lane in Early Years are asked to create a personal 'shoebox' that really shows us about your child. We will use this to help us get to know your child as they start their school life.

Decorating it

You could use (not exhaustive):

- Your child's favourite wrapping paper
 - Stickers
 - Craft materials

What it could include

(pictures/drawings/cuttings of – not exhaustive)

- family members
 - pets
 - things I like
 - things I don't
 - food I like
 - food I don't
- my favourite things to do

What not to include:

Anything that the children will miss. The boxes will remain in school so including items like favourite cuddly toy wouldn't be suitable. You could include a picture or drawing of this though.

Please bring this book with you when you start school. Don't forget your shoebox too!