





Measuring mass in grams 2

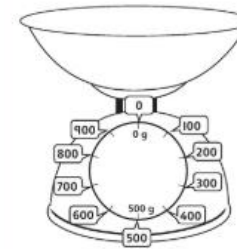
Discover



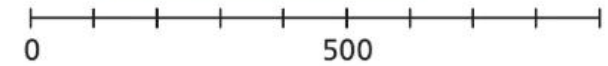
- 1 a) What is the mass of each  ?
- b) Another  weighs more than the smallest  but less than the middle  .
What could its mass be?




Share

- a) The vet's scales count in **hundreds**.




I used a number line to work out which numbers are missing from the scale.



- The smallest  has a mass of 300 g.
- The middle  has a mass of 700 g.
- The largest  has a mass of just under 800 g.
We can say it is 800 g to the nearest 100 g.



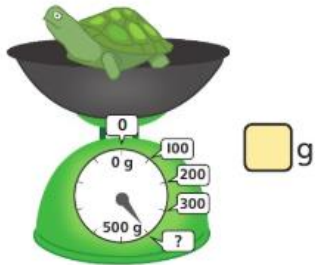
- The other  could have a mass of more than 300 g and less than 700 g.

Think together

- 1 Read the scales for these pets.

Write the mass of each pet to the nearest 100 g.

a)



b)



- 2 The vet weighs some hamsters, a squirrel and a rat.




- a) Copy and complete the statements.


The _____ is the lightest.

The _____ is the heaviest.

- b) Order the animals by mass.

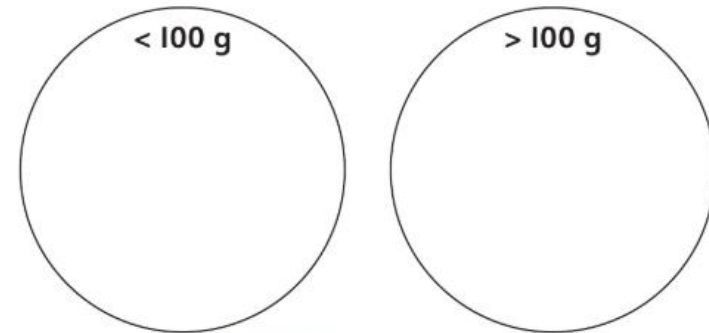
lightest _____ heaviest.

- 3 Hold a  in your hands (carefully!).

Find some objects in the classroom. Hold the  in one hand and an object in the other.

Estimate whether they have a mass of more than 100 g or less than 100 g.

Write your results in a diagram like this.



I think that a ruler feels lighter than 100 g.



Then check your predictions using balance scales.

CHALLENGE

Measure Mass in Grams

Match each item to the correct scale.



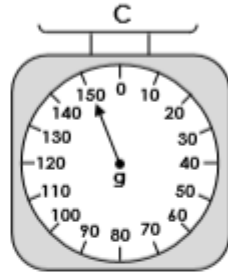
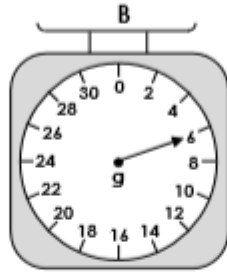
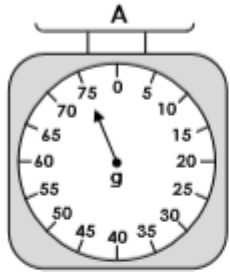
6g



150g

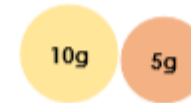
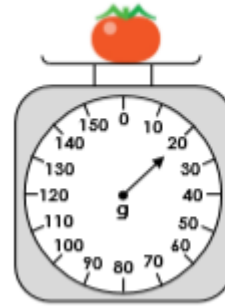


75g



VF
HW/Ext

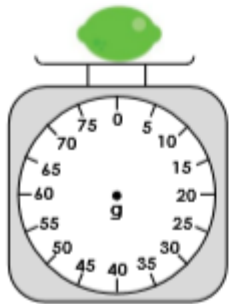
The carrot weighs twice as much as the tomato. Alfie has some 5g and 10g weights. Which weights could he use to balance the scales? Find 3 possible answers.



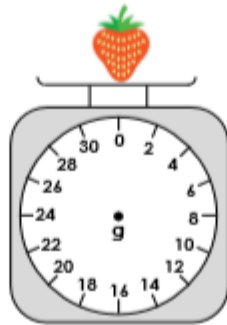
RPS
HW/Ext

Draw the pointer in the correct position on the weighing scales.

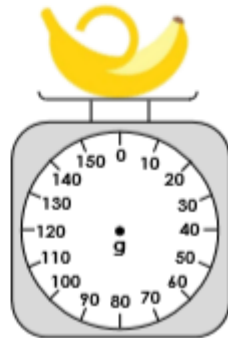
75g



12g



140g



VF
HW/Ext