

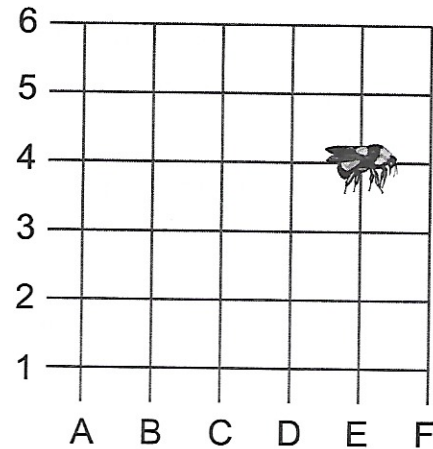


# Coordinates

1. A bee is at position **E4** on this grid.

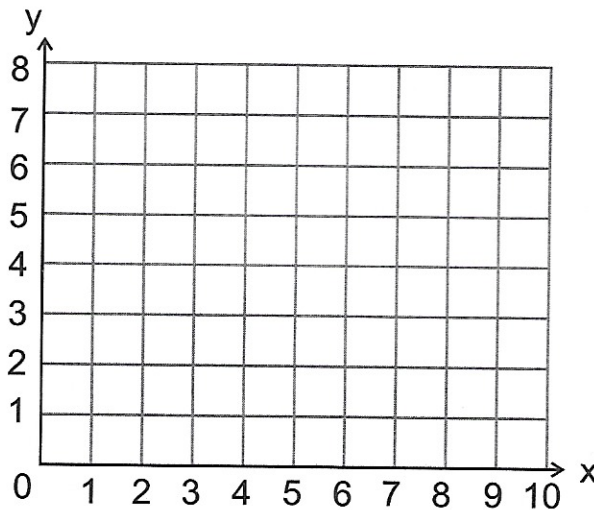
It moves 2 squares north, 1 square east,  
3 squares south and 4 squares west.

Mark a cross on the grid where the bee will stop.



2. A polygon has vertices at  $(2, 7)$ ,  $(4, 0)$ ,  $(8, 1)$ ,  $(10, 6)$  and  $(6, 8)$ .

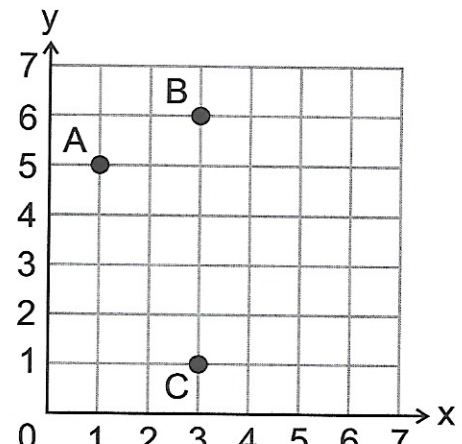
Use this information to draw the shape on the grid.



3. Points A, B and C are three vertices of a rectangle.

Give the coordinates of the  
fourth vertex of the rectangle.

Coordinates: (  ,  )





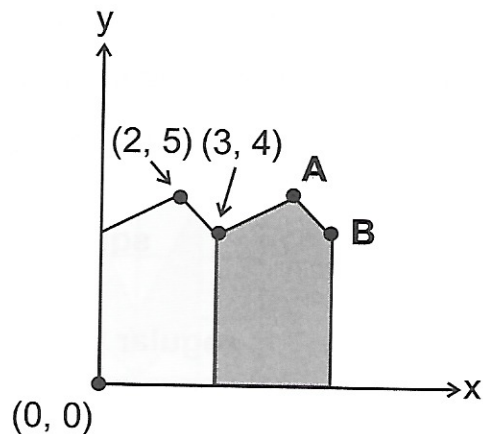
# Coordinates

4. The two shapes in this diagram are identical.

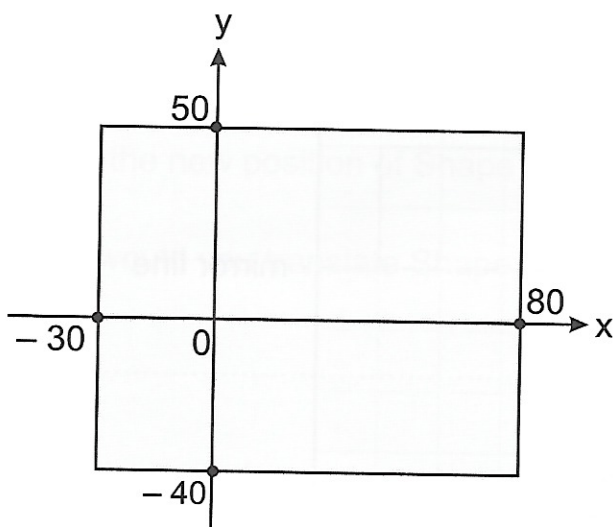
What are the coordinates of points **A** and **B**?

Coordinates of **A**: (  ,  )

Coordinates of **B**: (  ,  )



5. A rectangle is shown on the axes below.



Put a tick next to the coordinates that are **inside** the rectangle.

(60, 40)

(-60, -40)

(-35, -25)

(-25, 40)

6. This shape is symmetrical about the dotted line.

What are the coordinates of points **A**, **B** and **C**?

Coordinates of **A**: (  ,  )

Coordinates of **B**: (  ,  )

Coordinates of **C**: (  ,  )

